



a runner's map of TRACKTOWN USA



Vol. 3

created by: calvin brawner
updated by: jake willard
oregontrackclub.com

- Trails + Paths**
- 1. Skinner Butte
 - 2. Alton Baker Park + Pre's Trail
 - 3. Pioneer Parkway
 - 4. Fern Ridge Path
 - 5. Amazon Park
 - 6. Hendricks Park
 - 7. Dorris Ranch
 - 8. Mill Race Path
 - 9. Middle Fork Willamette River Path
 - 10. Weyerhaeuser Road - Thurston Hills
 - 11. Rexus Trail
 - 12. Ridgeline Trail at Willamette St
 - 13. Ridgeline Trail at Fox Hollow Rd
 - 14. Ridgeline Trail at Dillard Rd
 - 15. Mt. Baldy
 - 16. Spencer Butte Park
 - 17. Mt. Pisgah + Howard Buford Park
- Bark Trails
--- Gravel Trails
--- Dirt Trails
--- Paved Paths

Experience TrackTown

 Hayward Field at the University of Oregon Autzen Stadium	 Track Town Pizza 1809 Franklin Blvd Eugene, OR 97403	 Eugene Running Company 116 Oakway Center Eugene, OR 97401
 Track + Field Pre's Rock Pre's Trail	 The Duck Store 895 E 13th Ave Eugene, OR 97401	 Run Hub Northwest 515 High Street Eugene, OR 97401
 fly EUG Eugene Airport 28801 Douglas Dr Eugene, OR 97402		

Thank you for being a part of our community.

Originally founded as the Emerald Empire Athletic Association in 1958, the Oregon Track Club has been rooted in the sport of track and field in the Eugene/Springfield community for nearly 65 years.

Our founder, Bill Bowerman, saw the excitement for the sport in this town and did everything he could to nourish it. He created all-comers meets for the "youngsters" to compete and learn the sport; all-comers meets that are still held each summer to this day. He created opportunities for athletes of all ages and abilities to train and compete. The OTC maintains Pre's Trail and puts on monthly Run/Walks for the community. He also brought the best track meets to Hayward Field for everyone to enjoy, including the Olympic Trials in 1972, 1976, and 1980. The event would ultimately return in 2008, 2012, 2016, and 2020.

Throughout this town's rich history, Bowerman's principals and Oregon Track Club's members have helped solidify the title as Track Town, U.S.A. But it was the knowledge and excitement of the community that truly made this all possible.

We hope you enjoy your run along one of the many beautiful trails this town has to offer, the same trails that have made Olympians for decades.

Thank you for being a part of our community.
- Oregon Track Club

This map was made possible through contributions from the following local organizations

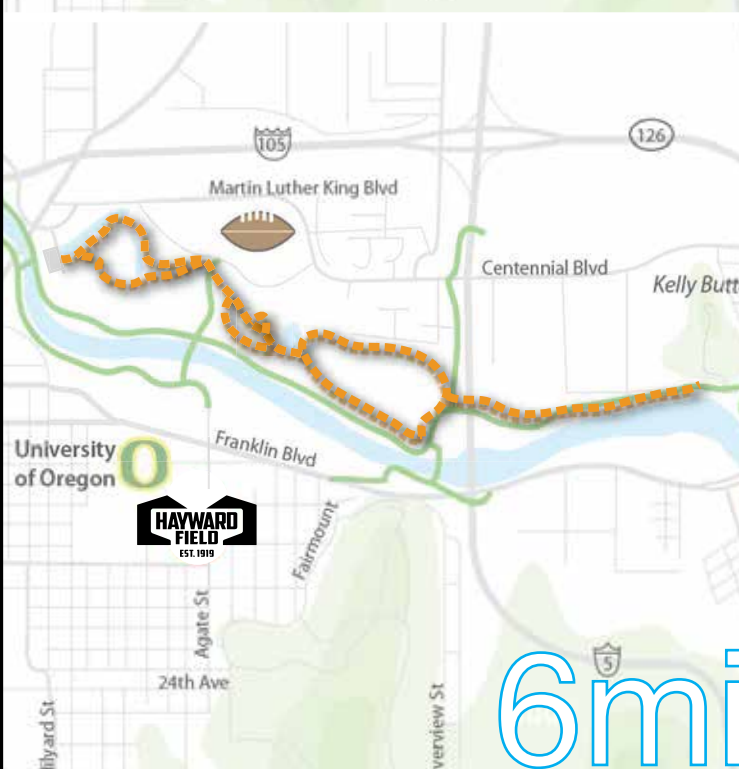
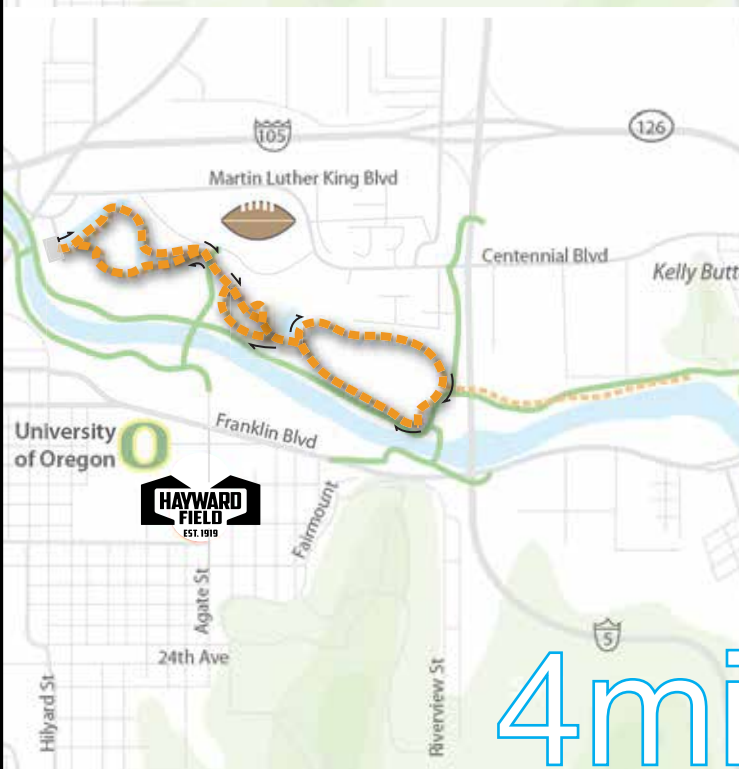
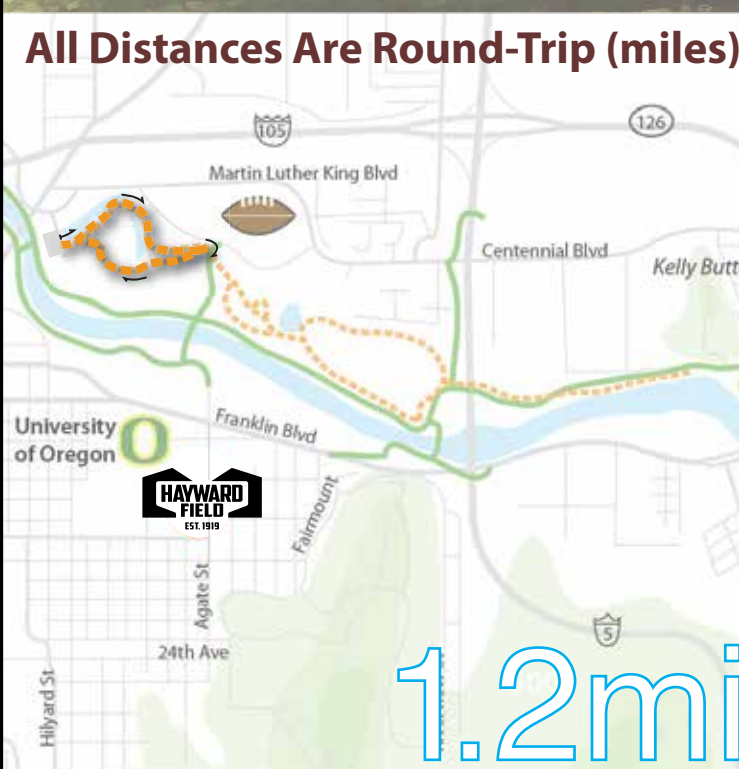


2 Alton Baker Park + Pre's Trail

A bark-chip path called **Pre's Trail** weaves through the park. There are great views of the Willamette River to the south and Autzen Stadium to the north. The park can be accessed on foot from the south side of the river via the Frohnmayer Foot Bridge. For a long run, check out The Ruth Bascom River Path. 14 miles in total or shorter using the foot bridges.
100 Day Island Road

scan for directions

Icons: Restroom, Water, Parking, Dog, Pre's Trail

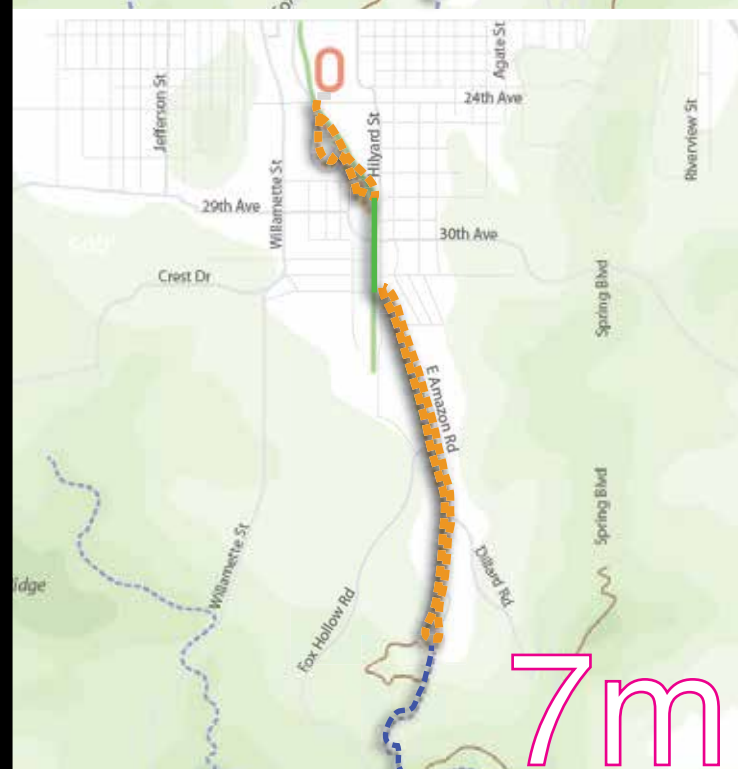
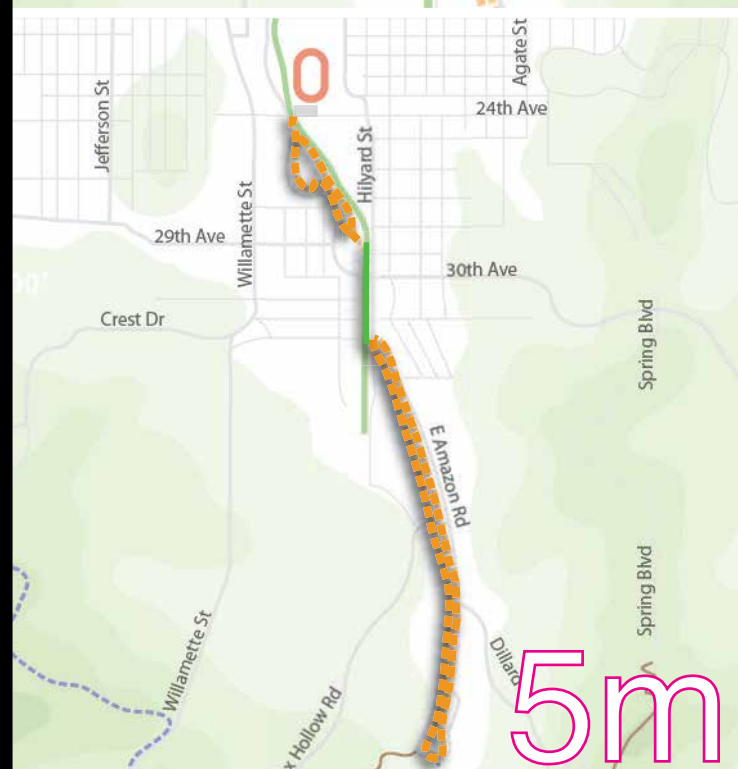
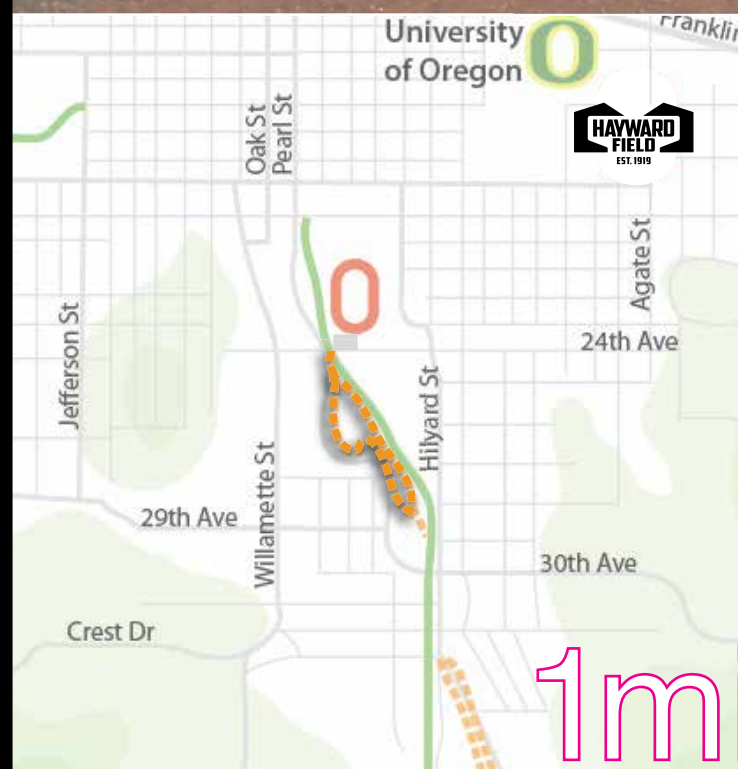


5 Amazon Park + Rexius Trail

The first portion of the trail is a mile bark-chip loop, where many of the nation's elite run. Four blocks south of Amazon Park, connected by a paved bike path, Rexius Trail extends south to the base of Spencer Butte and the Ridgeline Trail system. The trail becomes saturated in the winter months, but still provides great views of Spencer Butte and the surrounding South Hills.
Amazon Parkway and E 24th Avenue

scan for directions

Icons: Restroom, Water, Parking, Dog, Pre's Trail

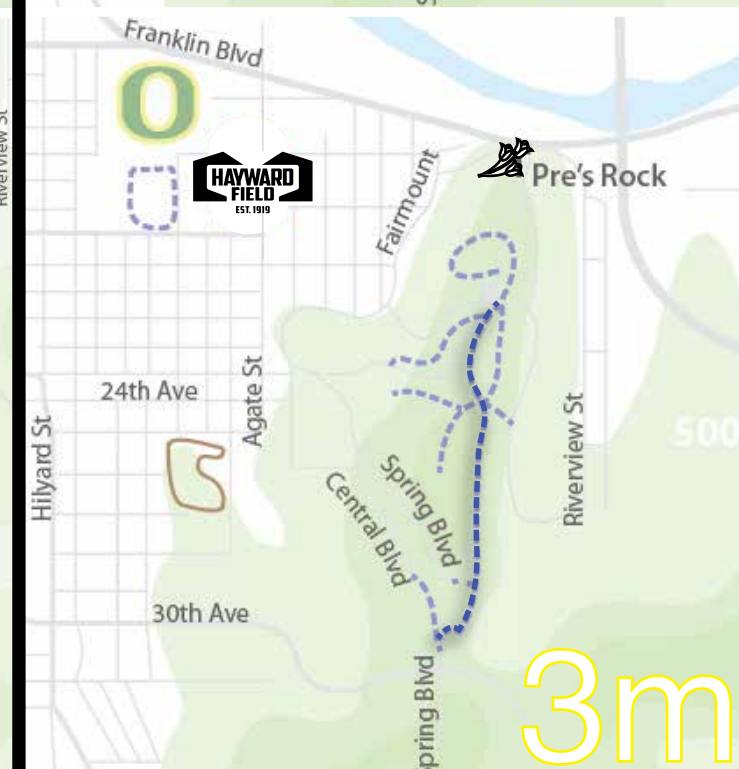
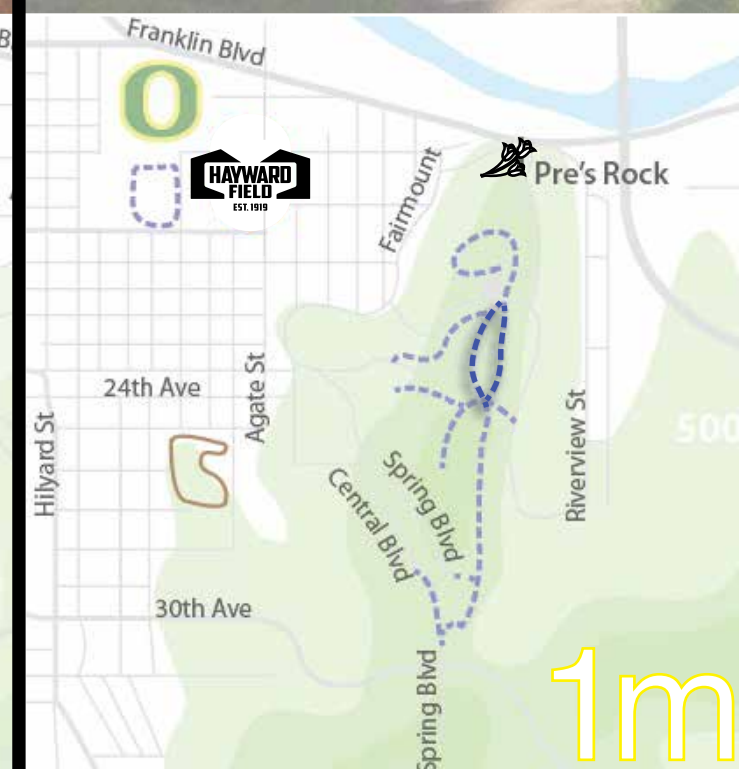


6 Hendricks Park

The tall conifer forest of Hendricks Park is visible to the southeast of Historic Hayward Field. **Pre's Rock** is north of the park on Skyline Blvd. There are many well maintained gravel trails throughout the park, which can be linked together to make a loop. The forest makes this a great place to escape the heat in the summer or the rain in winter.
Summit Avenue and Birch Lane

scan for directions

Icons: Restroom, Water, Parking, Dog, Pre's Rock

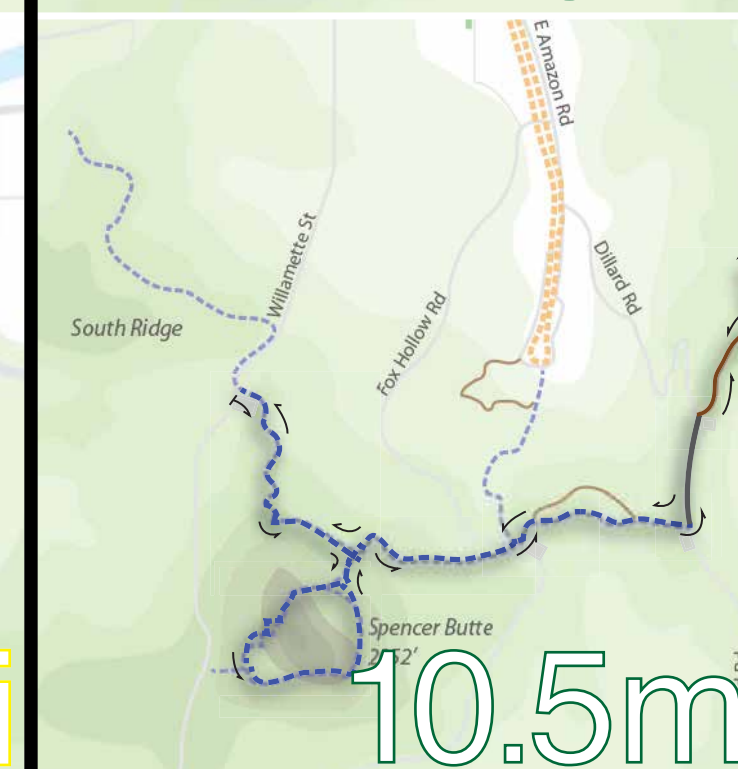
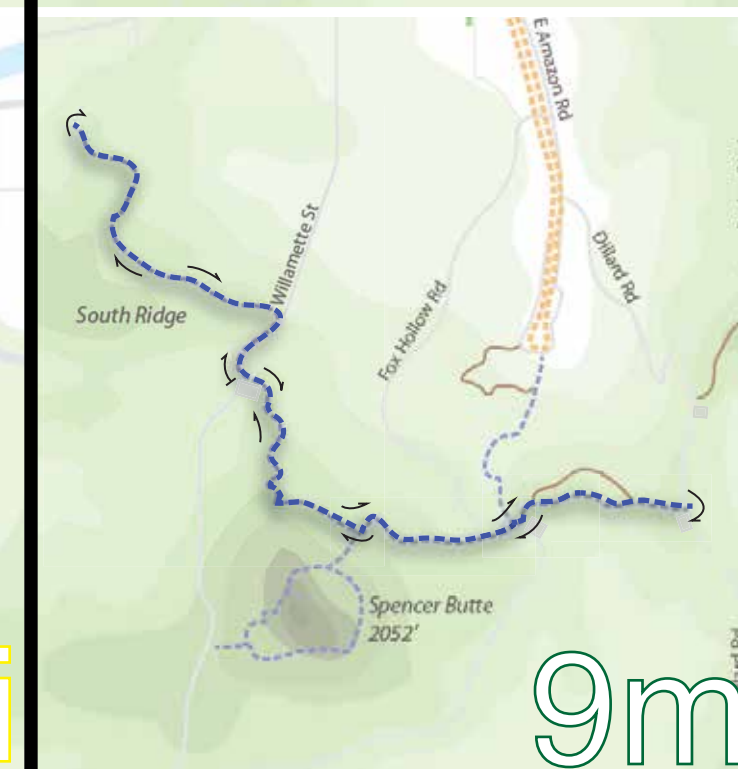


11 Ridgeline Trail + Spencer Butte

The Ridgeline Trail system covers a total of 14-miles. The Spencer Butte summit hike can be accessed from Ridgeline. A great view of Eugene can be seen from the summit's vista. The Fox Hollow trailhead can be accessed from the Rexius Trail. Ridgeline is a well maintained gravel trail shared by bicycles, hikers and runners. Cool in the summer and muddy at times in the wet winter months.
52nd Avenue and Willamette Street

scan for directions

Icons: Restroom, Water, Parking, Dog, Pre's Trail



16 Mt. Pisgah

Mt. Pisgah offers hikers and runners an excellent view of Eugene to the east and Springfield to the north. The mountain is a part of the Howard Buford Recreation Area and an arboretum. A well maintained gravel trail ascends the mountain, while less tamed trails loop around the park. Finish your run or hike with a picnic in the arboretum.
Seavey Way and Frank Parrish Road

scan for directions

Icons: Restroom, Water, Parking, Dog, Pre's Trail

